

## Calendar for August 2000

### August 2nd, at 7:30 P.M.

SCRA's General Membership Meeting Aglient Technologies, 1400 Fountain Grove Parkway in Santa Rosa At the time of submittal, the program is T.B.A.

### August 9th, at 6:00 o'clock P.M.

SCRA's Board of Directors Meeting Masterstouch Mortgage, 8979 Conde Lane in Windsor All SCRA members are welcome to attend.

### August 12th, 9:00 A.M.

Valley of the Moon Amateur Radio Club will be hold an ARRL VE Test Session For More Information Contact Colleen at (707) 996-9252.

### August 12th, All Day

The SCRA's 2 meter repeater will be in Public Service Net Mode. The SCRA Public Service Team who will be providing communications for the Vineman Triathlon. We apologize in advance for any inconvenience caused.

### August 16th, at 6:00 P.M.

REDXA's Membership Dinner Meeting Carrows, at Hwy 101 and E. Washington in Petaluma. Social Hour is at 6:00pm (in the bar), The dinner starts at 7:00pm, followed by the program at 8:00pm.

### August 11th, at 6:00 o'clock P.M.

Redxa's Social Gathering/Dinner @ San Francisco Yacht Club in Belvedere. All Amateurs in Sonoma County are welcome to attend!!  
TIME: 6pm-7pm Happy Hour, 7pm BBQ Dinner COST: \$10 for BBQ Dinner (chicken, salad, dessert, and beverage, (including tax and tip))  
DIRECTIONS: The SFYC is located at: 98 Beach Road, Belvedere. (Take 101 South; Tiburon Exit; Left at stop sign; continue on Tiburon Blvd. approx. 4 miles to Beach Road. Turn right to Yacht Club. Go slightly past the Yacht Club (around the curve) and turn left into the large parking lot) RSVP: Please RSVP to Jeff Basham, W2JAB by August 9th, so that I can let REDXA know how many non-members to expect! (707) 579-9608 x 12

Sonoma County Radio Amateurs, Inc.

PO Box 116

Santa Rosa CA 95402-0116

ADDRESS SERVICE REQUESTED

Expires: 03/01/2001

John Breckenridge  
574 Wild Oak Dr  
Windsor CA 95492

WB6FRZ

Presort Standard  
U.S. POSTAGE PAID  
SANTA ROSA CA

PERMIT NO. 658



Club Station  
**W6LFJ**

# Short Skip

Sonoma County Radio Amateurs, Inc

PO Box 116, Santa Rosa, CA 95402-0116

146.730 MHz • 224.48 MHz • 441.375 MHz

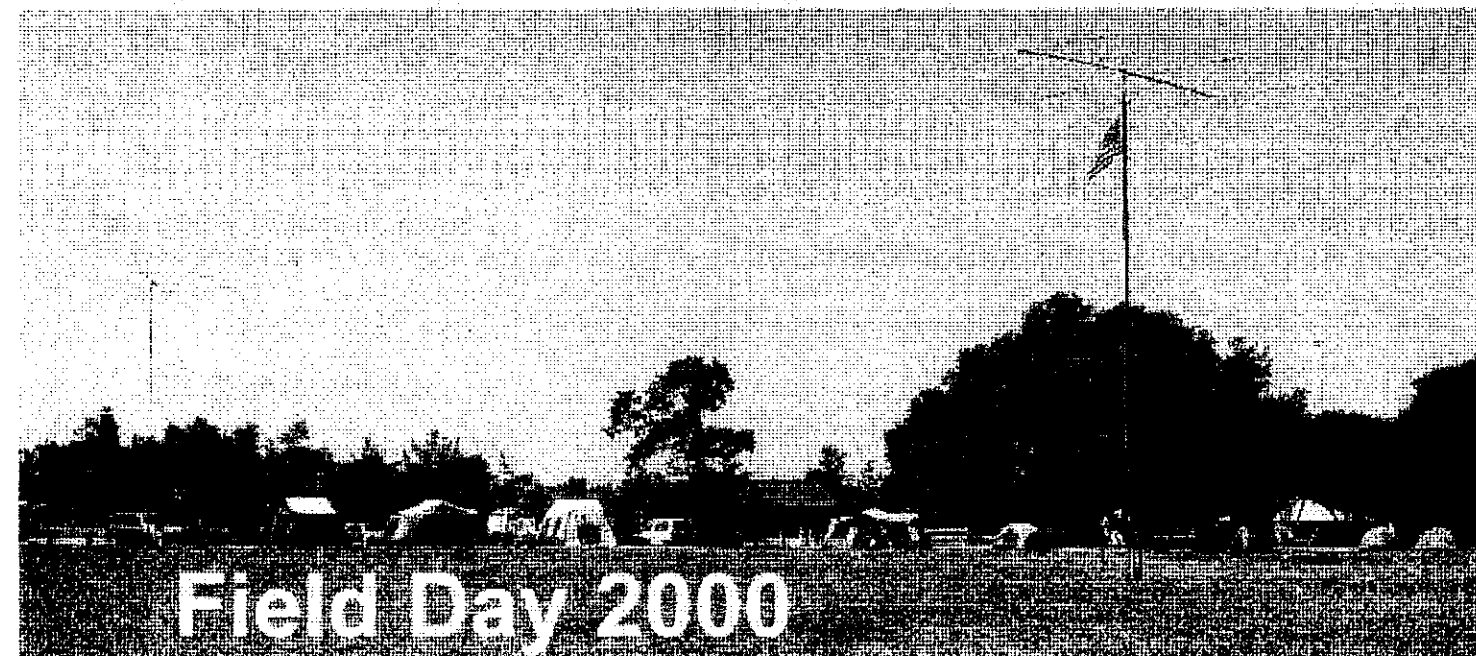


Repeater Station  
**W6SON**

Volume 25 Number VIII

<http://cds.cds1.net/scra/>

August 2000



Just after 2 PM on Friday, members started arriving at Santa Rosa's Youth Community Park to start the setup for the Field Day weekend. Brian Torr N6IYY supervised the antenna field layout and assembly which consisted of the club's TH-6 beam, a Cushcraft A3S beam, a multiband dipole, an inverted-V on 40 meters and a "Bowtie" on 10 meters. The TH-6 was placed atop Fred Leoni N6YEU's tubular crank up tower (Thanks, Fred!), the A3S was on the club's tilt-up mast and the dipoles were strung between the vertical supports and Brian's trailer antenna support system.

While the antennas were being raised, Jessica Harris KG6AAZ and her mom, Esther, worked with the other members assembling the tents for the operating stations. Four tents were raised for the 3A plus Novice/Tech station setup. Greg Gordon AC6VJ and Bill Hillendahl KH6GJV positioned the generators and laid out the power cords for each location. The generators used were the club's big, white WWII trailered generator and a backup generator borrowed from Hertz/Big 4 Rents by Wes Chapman K7DXG (Thanks, Wes!). Club members, members of the Civil Air Patrol Squadron led by Tony Hammill and his son Zach Hammill KG6ABA, and Boy Scouts brought by Mike Von der Porten KD6ZZD, which included Steven Von der Porten and Chris Russell, split their time during setup between helping raise the antennas and putting up the tents. The setup was completed in record time with no mishaps or antenna damage.

A number of people were staying overnight so the group decided to enjoy a nourishing meal of pizzas from the nearby Round Table. After the pizzas were devoured in what reminded some of a feeding frenzy of piranhas, Bill KH6GJV held a mini-class on contesting in the RV he brought to the site. After the class, Bill put a station on the air for the students to practice making contacts. One of the first contacts was to a station in Northern Italy.

The kids were up way too early on Saturday morning startling awake the more sleep-deprived adults. Station Captains John Mullan KD2L, Greg Gordon AC6VJ, Bill McCall W6WDM and Rich Freitas KF6SZA went about making sure that their stations were fully equipped and operating prior to the 11 AM start. Final checks were made to the antennas and power systems. All was in perfect working order. While waiting for the official start, Public Information Officer Bill McCall W6WDM, Tony Hammill and Bill KH6GJV setup an information booth for those that dropped by to obtain information on Ham Radio, SCRA, ARRL and the Civil Air Patrol. Jeff Basham W2JAB put the finishing touches on the networked computer logging system that the club was trying for the first time this year and at the same time kept checking to make sure that he hadn't forgotten anything for Field Day.

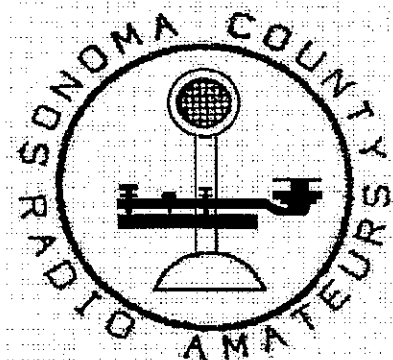
**2000 Club Officers**

PRESIDENT	Rick Reiner	K6ZWB	575-4455
VICE-PRESIDENT	Greg Gordon	AC6VJ	523-7077
SECRETARY	Bill Hillendahl	KH6GJV	538-0331
TREASURER	Jim Cardillo-Lee	KE6VGV	778-7474
MEMBERS-AT-LARGE	Bill McCall	W6WDM	538-2844
	Rich Freitas	KF6SZA	578-9335
REPEATER CHAIRMAN	Greg Gordon	AC6VJ	523-7077
ACTIVITIES	Jeff Basham	W2JAB	575-9354
PUBLIC SERVICE	John Mullan	KD2LQ	575-9176

----- SHORT SKIP STAFF -----

EDITOR	Henry Tate	KE6ORF	415-663-8227
AUDIO TAPING	Jeff Basham	W2JAB	575-9354
SWAP SHOP WEB ED.	Jeff Basham	W2JAB	575-9354
SCRA Webmaster	Jeff Basham	W2JAB	575-9354

Short Skip Editor E-mail [ke6orf@arri.net](mailto:ke6orf@arri.net)



**CLUB MEETINGS**

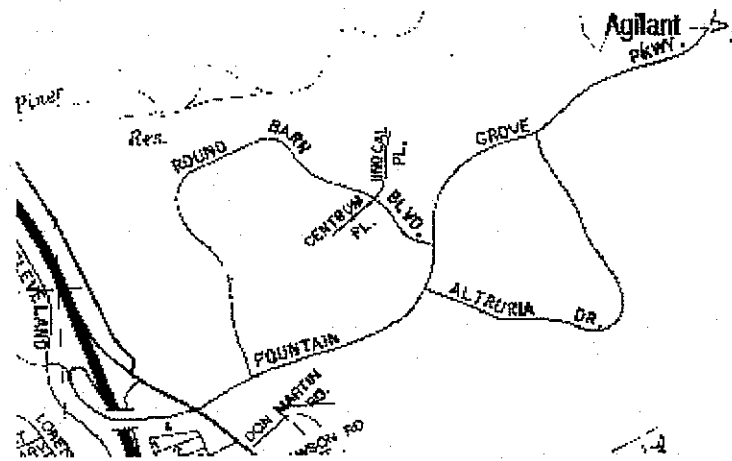
**7:30pm** on the first Wednesday of each month at the Agilent plant (formaly HP) in SANTA ROSA. See map below.

**ALL ARE WELCOME!!**

We invite you to attend our next monthly meeting. Membership in SCRA is open to anyone interested in Amateur Radio. If you would like to join, there is a membership application in this issue.

**Next Meeting:  
August 2, 2000**

**7:30pm**  
Program TBA



SCRA HOTLINE: 707-579-9608

Web Address: <http://cds1.net/scra>

Short Skip On-line: <http://cds1.net/shortskip>

**Tuesday Night Net**

Check into the Tuesday Night SCRA net on the 146.73 repeater at 7:00pm. Announcements of upcoming SCRA activities, a Swap Shop, and the latest Amateur Radio News line broadcasts can be heard.

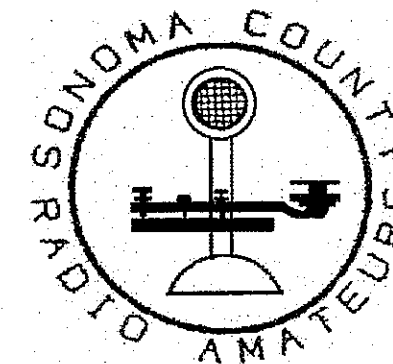
*Short Skip Advertising Rates*

<b>Business Cards:</b>	<b>\$10</b>
First Quarter Column:	\$11
Each Additional Quarter Column	\$ 3
Full Page, one side	\$32
Pre-printed inserts	\$32/sheet

**Guaranteed Circulation of 200 per month**

**CONTACTS**

Public Relations	Bill McCall	W6WDM	538-2844
TV/IRFI	Alan Bloom	N1AL	538-7115
Refreshments	Ted DeCroff	KB6PTA	542-4008
	Dawn Silveira	KA6OPN	763-1457
Raffles	Jeff Basham	W2JAB	575-9354
Antenna Ordinance/Legal	Lee Dibble	KE6EAQ	544-1675



**Application for Membership in SCRA**

Name \_\_\_\_\_ Call sign \_\_\_\_\_ License Class \_\_\_\_\_

Address \_\_\_\_\_ Phone \_\_\_\_\_ Date \_\_\_\_\_

City \_\_\_\_\_ Zip \_\_\_\_\_ E-mail \_\_\_\_\_

New  Renewal

**SCRA Dues:** The renewal date for SCRA dues is March 1st. Dues are \$18/year for individual and \$27/year for families. The new member initiation (badge) fee is \$7/person. Dues for new members only are prorated at \$1.50/month for individuals and \$2.25/month for families, starting at renewal time. ARRL dues: \$34/year, (\$28/year over 65 with proof of age.) Under 21 rates require application form. When renewing your ARRL membership, do it through the club and SCRA gets to keep some of the money.

(Please make checks payable to SCRA.)

**I WOULD LIKE MORE INFORMATION ABOUT:**

- |  |  |
|--|--|
| <input type="checkbox"/> Public Service Events                 | <input type="checkbox"/> Helping with SCRA Flea Market               |
| <input type="checkbox"/> Emergency Services                    | <input type="checkbox"/> Acting as Net Control Station               |
| <input type="checkbox"/> Taking a Novice or Technician class   | <input type="checkbox"/> Helping with VEC license exams              |
| <input type="checkbox"/> Teaching a Novice or Technician class | <input type="checkbox"/> Field Day and other operating events        |
| <input type="checkbox"/> Taking an upgrade class               | <input type="checkbox"/> Helping with <i>Short Skip</i> (newsletter) |
| <input type="checkbox"/> Teaching an upgrade class             | <input type="checkbox"/> Other _____                                 |

**BADGE (New Members Only)**

Fill in this section exactly as you want it to appear on your badge.

Call sign \_\_\_\_\_

First Name \_\_\_\_\_

City: \_\_\_\_\_

**Auto slot Request:** Licensed SCRA members are entitled to a repeater auto slot. Fill in the information below to apply and send the form to: SCRA, PO Box 116, Santa Rosa CA 95402

Name: \_\_\_\_\_

Call sign: \_\_\_\_\_

Phone Number: \_\_\_\_\_

## Texas, Oregon, Oklahoma Hams Fill In During Telephone Outages

NEWINGTON, CT, July 5, 2000--Hams in three states have been able to fill the communication gap during recent unexpected telephone outages.

In Texas, telephone communication in the New Braunfels area was disrupted early last Friday due to major problems in the telephone switching network. The cause and extent of the problem were not clear, but, according to ARRL Official Relay Station Dan Whelchel, K5IQZ, the only telephone services left working were cellular-to-cellular and cellular-to-911.

As of today, Whelchel said, phone service in New Braunfels was still problematic. "The phone system still is not fully working," Whelchel said, adding that the system sometimes cuts off in mid-call. "Incoming calls are working to some extent. Outgoing calls are very poor," he said.

Whelchel says that Amateur Radio filled in during the early hours of the outage, handling messages between New Braunfels and San Antonio. He added that very little ham radio message traffic was being handled today, but hams remain on stand-by.

In Southern Oregon, telephone service was interrupted June 26 when fire severely damaged a US West central telephone switching facility in Medford. "There was a widespread interruption of telephone, Internet, and other services such as ATMs in Jackson County," says Sacramento Valley (North) SEC David Thorne, K6SOJ.

Thorne says the emergency generator system was turned off at the request of the fire department, and the battery back-up system was depleted within hours due to high usage. Service was largely restored by late the next day.

Thorne says Jackson County ARES was activated, and the Douglas County ARES/RACES team was on duty at the EOC in Roseburg. Hams were able to handle at least one piece of emergency traffic.

"It involved a message concerning blood from the Red Cross Blood Center in Portland to the hospital in Klamath Falls," Thorne reports. He said the landline message from Portland was received at the Roseburg EOC and relayed via ARES operators to Bill Mason, KA7RAM, in Klamath Falls--who represents Klamath County on many ARES nets. Mason delivered the traffic via landline (local service was operational in Klamath Falls), got an answer, and promptly relayed the traffic back to Roseburg. The EOC then delivered the reply to Portland via telephone.

In Oklahoma, a power failure at 3:45 on the morning of June 20 took out almost all land-based telephone systems in the 918 area code around Tulsa for several hours. Although some

paggers and cellular phones still had limited capabilities, most of the calling public could not even call 911.

ARRL PIO Mark Conklin, N7XYO, reports that, with the phones out, hams initially were out of the notification loop. Conklin says a few members of the Tulsa Repeater Organization overheard the radio traffic on scanners, however, and, before long, an ARES net was established on a local repeater with Ron Lancaster, KB5VDB, and Merlin Griffin, WB5OSM, at the Tulsa EOC.

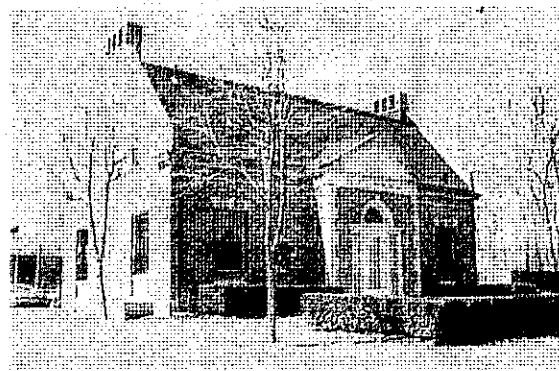
A hospital net followed suit, and hams were dispatched to emergency rooms as they checked in. By 7 AM, Conklin reports, nearly 20 hams were helping out with the emergency, and hospitals 50 miles north and south of Tulsa were staffed by ham volunteers. All telephone service was restored by around 7:30 AM.--thanks to Dan Whelchel, K5IQZ, and David Thorne, K6SOJ, and Mark Conklin, N7XYO

Reprinted from the ARRL news letter

## K2ORS to become hall of famer:

The late radio storyteller and talker Jean Shepherd, K2ORS, is among those scheduled to be inducted posthumously into the Broadcasting & Cable Hall of Fame this fall. The ceremony is set for November 13 in New York City. Shepherd died last October at the age of 78. Many remember him best for his late-night talk program on New York's WOR, where he sometimes spoke of his Amateur Radio activities. After his death, some hams wrote the ARRL to say they'd been inspired by Shepherd's monologues to pursue their own radio activities. Shepherd also wrote and produced several programs for public television and once was the banquet speaker at the Dayton Hamvention.--Broadcasting & Cable; Shop Talk

Reprinted from the ARRL news letter



## Field Day 2000

11 o'clock arrived very quickly. The stations were manned and ready by eager youngsters, both licensed and not, with the more experienced operators standing back to supervise. When the magic hour arrived, the youthful operators lit up the transmitters calling CQ or answering them. The adult operators had a tough time getting to the radios with all the kids taking over, but no one was complaining. Al Bloom N1AL and Sue Bennett N3SU got on the air and were responsible for the vast majority of the CW contacts made. Among the other operators not mentioned above included Nick Rogers KG6AAY, Brian Lukrich KG6AQT, Rory Tiedemann KF6YUD and Randy Black



KD6VMZ. (Sorry, I didn't take notes on everyone who showed up!)

Later in the afternoon, in retaliation for the late night and early morning harassment, several of the "adults" took on the kids in a surprise water balloon war. Unfortunately, most of the kids were able to keep dry by outrunning the attackers.

While the contest was on, Greg AC6VJ and Bill KH6GJV babysat the generators which performed without a hitch the whole weekend. Chef John Mullan KD2L and his XYL Sue K8SUE went about their job preparing the evening BBQ. As usual, John created his usual gastronomical extravaganza which John reports was enjoyed by about 50 people, the largest turnout in several years. John was challenging the consumers to identify the

secret ingredient in his BBQ beans. No one came up with the answer by dinner's end. Once dinner was over, it was back to the radios late into the night. With some of the kids now tired, a few of the adults were able to get to the radios and make their share of contacts. The generator was finally shut down at about 3 AM for a rest.

Morning again arrived early, but this time for the youngsters. Esther Harris woke up the snoozing youths with the bray of a bull horn sounding much like the melodious tones of a bootcamp drill sergeant complete with siren. She even ventured over to a distant tent which was later discovered to be occupied by a complete stranger who had camped for the night. What a rude awakening!

Field day cont:

the crews were bringing down the antennas, the kids, who had prepared all night, launched their revenge attack on certain specific adults for their complicity in the previous day's water balloon assault. It was a massacre! The too-tired adults could not get out of the way and were only saved by a flying tackle by Tony Hammill of his son, Zach who held a large number of balloons. Bill KH6GJV headed directly into the approaching force targeting the weapon supply holder, Jeff Basham W2JAB, and grabbed a number of balloons breaking them over Jeff's head. The cooling encounter was appreciated by most as the day had begun to heat up and the work was yet to be finished.

As Field Day 2000 came to a close, a number of participants commented on how they felt that it was the best organized and most fun Field Day that they had had in several years. Many thanks to all those involved. See you next year! The club directors, as promised, set out to make breakfast with Bill McCall W6WDM on the bacon and egg pan, and Bill KH6GJV and Greg AC6VJ working the eaten-as-quick-as-they-were-made pancake production. After breakfast, yep, back to the radios!

The 11 AM shutdown came about too early as expected. Then came the task of breaking camp. The site was broken down without accident or incident and the property returned to storage for next year.

FCC'S HATFIELD TELLS HAMS TO "WALK THE WALK"

The FCC's Dale Hatfield, W0IFO, predicts a bright future for Amateur Radio. But the Office of Engineering and Technology chief says that amateurs "will be under a certain amount of pressure" to justify their free use of the radio spectrum. As a result, he said, it will be more important than ever that hams actually fulfill their service, good will and educational roles--not just talk about them.

Hatfield offered his observations as keynote speaker for AMRAD's 25th anniversary dinner June 17 in Virginia. Hatfield told the gathering, "the key issue for the amateur service is maintaining access to an adequate amount of spectrum." While emphasizing that he was not suggesting any immediate threat, Hatfield said hams will have to do a better job of justifying their current allocations.

Hatfield said hams should actually engage in experimentation to advance the state-of-the-art, provide communication and train operators for emergencies, encourage international cooperation and good will, and offer an important technical educational outlet. "Or, to use a bit of slang, it seems to me that it will be even more important for all segments of the amateur community to 'walk the walk' not just 'talk the talk'," he said.

Hatfield encouraged his audience to explore advanced techniques that conserve spectrum, especially digital techniques. As the rest of the telecommunications world transitions to digital techniques, Hatfield said, "the amateur service will look antiquated if it is not making progress in that direction as well."

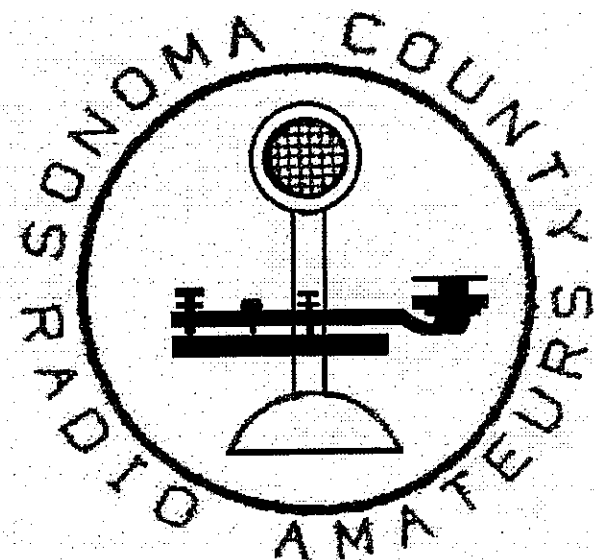
Hatfield also said software defined radios could facilitate "a new era of amateur experimentation" and, in many ways, represent "a final merger" of radio communications and computers.

The text of Hatfield's prepared remarks is available on the FCC Web site at <http://www.fcc.gov/Speeches/misc/dnh061700.html> Reprinted from the ARRL news letter

California PRB-1 bill update:

The California effort to incorporate the essence of the limited federal preemption known as PRB-1 into state law continues. The California Assembly's Local Government Committee acted favorably on the bill, SB-1714, on June 28. The vote was 9-0. The measure now has been referred to the Committee on Appropriations, which has scheduled a hearing for August 8 in Sacramento. ARRL Pacific Division Director Jim Maxwell, W6CF, and Southwestern Division Director Fried Heyn, WA6WZO, are urging California amateurs to express their opinions on the bill to their Assembly representatives. It's not known when SB-1714 might reach the floor of the Assembly. The bill already passed the California Senate 39-0. Maxwell requests copies of any correspondence to Assembly members to [w6cf@arll.org](mailto:w6cf@arll.org). He notes that correspondence to Assembly members should reference SB-1714.

Reprinted from the ARRL news letter



- ANAHEIM, CA**  
(Near Disneyland)  
833 N. Euclid St. 92801  
(714) 533-7373  
(800) 854-6046  
Janet, KL7MF, Mgr.
- BURBANK, CA**  
2492 W. Victory Bl. 91506  
(818) 842-1786  
(800) 854-6046  
Eric, K8BHT, Mgr.  
Victory Blvd. at Buena Vista  
1 mi. west I-5
- OAKLAND, CA**  
2210 Livingston St. 94606  
(510) 534-5757  
(800) 854-6046  
Mark, W17YN, Mgr.  
I-880 at 23rd Ave. ramp
- SAN DIEGO, CA**  
5375 Kearny Villa Rd., 92123  
(619) 560-4900  
(800) 854-6046  
Tom, K6MJK, Mgr.  
Rwy. 163 & Claremont Mesa
- SUNNYVALE, CA**  
510 Lawrence Exp. #102  
94086  
(408) 736-9496  
(800) 854-6046  
Ken, K1ZKM, Mgr.  
So. from Hwy 101
- NEW CASTLE, DE**  
(Near Philadelphia)  
1508 N. Dupont Hwy. 19720  
(302) 322-7922  
(800) 644-4476  
Rick, K3TL, Mgr.  
Rt. 13 1/4 mi. So. I-295
- PORTLAND, OR**  
11705 S.W. Pacific Hwy.  
97223  
(503) 528-0555  
(800) 854-6046  
Rich, K67PL, Mgr.  
Toward ORW at  
Hwy 101 2 & 217
- DENVER, CO**  
6480 E. Hill Ave. #8, 80231  
(303) 745-7373  
(800) 444-9476  
Joe, K6HGA, Mgr.
- PHOENIX, AZ**  
1530 W. Camelback Ave. 85021  
(602) 242-2315  
(800) 444-9476  
Gary, W4LJ, Mgr.  
1 mi. east of I-17
- ATLANTA, GA**  
6071 Buford Hwy. 30340  
(770) 263-9700  
(800) 444-7927  
Phil, N4CBO, Mgr.  
Doraville 1 mi. so. at I-285
- WOODBRIIDGE, VA**  
(Near Washington D.C.)  
14833 Blvd America Dr.  
22131  
(703) 643-1663  
(800) 444-4799  
Mike, N4MJK, Mgr.  
Rte 161, 1/2 mi. so. to US 1
- SALEM, NH**  
(Near Boston)  
324 N. Broadway, 03079  
(603) 599-3722  
(800) 444-0847  
Frank, K1MANZ, Mgr.  
466 S. High St. at  
Rte 1 1/2 mi.  
1 mi. No. of Boston

12 Store Buying Power!



# HAM RADIO OUTLET

WORLDWIDE DISTRIBUTION

<p style="text-align: center; font-weight: bold; background-color: black; color: white; padding: 2px;">KENWOOD</p>  <p style="font-weight: bold; font-size: 0.8em;">TS-50S/TS-60S HF Transceiver</p> <ul style="list-style-type: none"> <li>• 15-60S - World's longest HF Transceiver</li> <li>• 100W out - 50W TS-60S 30min duty</li> <li>• 25W CW AM FM</li> <li>• 12V Gen. Conv. Pk. 6.4 lbs. 7.13" x 2.4" x 9.32"</li> <li>• 100db dynamic range, 100 MHz</li> <li>• Opt. car. ant. Tuners available 115-500 ohms</li> </ul> <p style="font-weight: bold; font-size: 0.7em;">Call Now For Our Low Pricing!</p>	<p style="text-align: center; font-weight: bold; background-color: black; color: white; padding: 2px;">SUNNYVALE, CA 94086</p> <p style="font-size: 0.7em;">510 Lawrence Expwy. #102 (408) 736-9496 (800) 854-6046</p>	<p style="text-align: center; font-weight: bold; background-color: black; color: white; padding: 2px;">OAKLAND, CA 94606</p> <p style="font-size: 0.7em;">2210 Livingston St. (510) 534-5757 (800) 854-6046</p>
---	--	---

<p style="text-align: center; font-weight: bold; background-color: black; color: white; padding: 2px;">ICOM</p>  <p style="font-weight: bold; font-size: 0.8em;">TH-G71A</p> <ul style="list-style-type: none"> <li>• 200MHz Dual Band HT</li> <li>• 20W Power • PD Programmable</li> <li>• 12.5KHz 5 Hz 10KHz 15.0KHz VFO</li> <li>• Digital Memory Display</li> <li>• 10000 Dual Tone Memory</li> </ul> <p style="font-weight: bold; font-size: 0.7em;">Call For Low Intro. Price!</p>	<p style="text-align: center; font-weight: bold; background-color: black; color: white; padding: 2px;">ALINCO</p>  <p style="font-weight: bold; font-size: 0.8em;">DJ-S41T/DJ-S11T</p> <ul style="list-style-type: none"> <li>• 400mw HT</li> <li>• 21 memories</li> <li>• 1200 5-DIGIT Channels</li> <li>• Memory Scan</li> <li>• 1000 Channels</li> <li>• 2 1/4" wide (DJ-S41T)</li> </ul> <p style="font-weight: bold; font-size: 0.7em;">Call For Low Pricing!</p>
--	--

<p style="text-align: center; font-weight: bold; background-color: black; color: white; padding: 2px;">KENWOOD</p>  <p style="font-weight: bold; font-size: 0.8em;">IC-706Mk II</p> <ul style="list-style-type: none"> <li>• 100W HF</li> <li>• 100W 6 Meters</li> <li>• 20W 2 Meters</li> <li>• 50W CW 10m</li> </ul> <p style="font-weight: bold; font-size: 0.7em;">Call For Low Pricing!</p>	<p style="text-align: center; font-weight: bold; background-color: black; color: white; padding: 2px;">ALINCO</p>  <p style="font-weight: bold; font-size: 0.8em;">DX-70T</p> <ul style="list-style-type: none"> <li>• 100W 160-18 MHz • 10W 6M 30min duty</li> <li>• Full DSK 100 MHz • Standard Removable</li> <li>• Dual 100 10VDC • 6.2 lbs</li> </ul> <p style="font-weight: bold; font-size: 0.7em;">100W/6M DX-70T Now Available!</p>
--	---

<p style="text-align: center; font-weight: bold; background-color: black; color: white; padding: 2px;">KENWOOD</p>  <p style="font-weight: bold; font-size: 0.8em;">TM-V7A</p> <ul style="list-style-type: none"> <li>• 50W 50W • 120 Memories • Scan</li> <li>• Alpha Numeric • 6.1 lbs. • 8.5" x 4.5" x 1.5"</li> <li>• Computer Programming • 4000 Dual Tones</li> <li>• Long-Term Memory • 100 Channels</li> </ul> <p style="font-weight: bold; font-size: 0.7em;">Call Now For Low Price!</p>	<p style="text-align: center; font-weight: bold; background-color: black; color: white; padding: 2px;">YAESU</p>  <p style="font-weight: bold; font-size: 0.8em;">VX-1R</p> <ul style="list-style-type: none"> <li>• 200 Memory Channels</li> <li>• 5W Output</li> <li>• Repeater 76-99MHz</li> <li>• plus AM RLS</li> <li>• (Call Band Blocker)</li> <li>• Lithium Ion Battery</li> </ul> <p style="font-weight: bold; font-size: 0.7em;">Call Now For Your Low Price!</p>
---	--

<p style="text-align: center; font-weight: bold; background-color: black; color: white; padding: 2px;">COAST TO COAST</p> <p style="font-weight: bold; font-size: 0.8em;">FREE SHIPPING</p> <p style="font-size: 0.7em;">UPS - Most Items Over \$100</p>  <p style="font-weight: bold; font-size: 0.7em;">Rapid Deliveries From The Store Nearest To You!</p>	<p style="text-align: center; font-weight: bold; background-color: black; color: white; padding: 2px;">YAESU</p>  <p style="font-weight: bold; font-size: 0.8em;">FT-50RD</p> <ul style="list-style-type: none"> <li>• 200 Memories</li> <li>• 5W Output</li> <li>• Repeater 76-99MHz</li> <li>• plus AM RLS</li> <li>• (Call Band Blocker)</li> <li>• Lithium Ion Battery</li> </ul> <p style="font-weight: bold; font-size: 0.7em;">Call For Your Low Pricing!</p>
--	---

<p style="text-align: center; font-weight: bold; background-color: black; color: white; padding: 2px;">YAESU</p>  <p style="font-weight: bold; font-size: 0.8em;">FT-1000MP</p> <ul style="list-style-type: none"> <li>• 200 Memories</li> <li>• 5W Output</li> <li>• Repeater 76-99MHz</li> <li>• plus AM RLS</li> <li>• (Call Band Blocker)</li> <li>• Lithium Ion Battery</li> </ul> <p style="font-weight: bold; font-size: 0.7em;">Call Now For Low Pricing!</p>	<p style="text-align: center; font-weight: bold; background-color: black; color: white; padding: 2px;">YAESU</p>  <p style="font-weight: bold; font-size: 0.8em;">FT-1000MP</p> <ul style="list-style-type: none"> <li>• 200 Memories</li> <li>• 5W Output</li> <li>• Repeater 76-99MHz</li> <li>• plus AM RLS</li> <li>• (Call Band Blocker)</li> <li>• Lithium Ion Battery</li> </ul> <p style="font-weight: bold; font-size: 0.7em;">Call Now For Low Pricing!</p>
--	--



# HSC ELECTRONIC SUPPLY

\* NEW LOCATION! \*

5681 Redwood Drive, Rohnert Park

## RAMSEY KITS

- VHF power amplifiers
- All-mode HF receivers
- QRP CW Transmitters
- Etc...

## ARRL BOOKS

- ARRL Handbook
- License Manuals
- Antenna Books
- Etc...

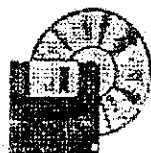
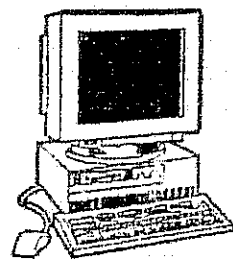
## OAK HILLS QRP KITS

- Transceivers: 80, 40, 30 & 20M
- Wattmeters
- SCAF Filters
- MFJ accessories
- Code keys
- Van Gorden Antennas
- Surplus Electronics
- Tools, parts, etc...

## YOUR IBM CLONE HEADQUARTERS

FROM PC-AT's TO STATE-OF-THE-ART PENTIUM SYSTEMS,

YOU'LL FIND IT AT HSC



- Complete systems
- Cases, Supplies, Motherboards
- Hard/Floppy Discs, Monitors
- I/O Cards, Memory Chips
- Software, etc...



Electronics • Prototyping Supplies • Computers • Lasers

Ed Jacobson "AB6OL"  
Store Manager

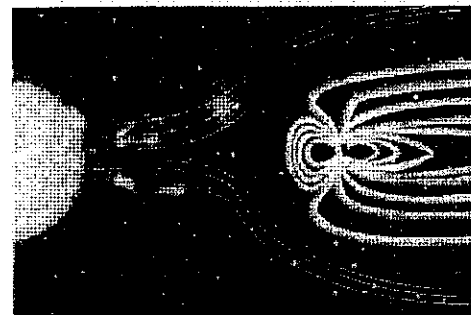
5681 REDWOOD DRIVE  
ROHNERT PARK, CA 94928

PH: (707) 585-7344  
FAX: (707) 585-7597

## More Accurate Space Storm Warnings Now Possible

WASHINGTON, DC, Jun 20, 2000 (NASA)--The arrival from the sun of billion-ton electrified-gas clouds that cause severe space storms can now be predicted to within a half-day--a great improvement over the best previous estimates of two to five days.

Scientists at the Catholic University of America, Washington, DC, and NASA's Goddard Space Flight Center, Greenbelt, Maryland, have created a model that reliably predicts how



much time it takes for these clouds, called Coronal Mass Ejections--or CMEs--to traverse the gulf between the sun and the earth, based on their initial speed from the sun and their interaction with the solar wind.

The new model uses recent observations from the European Space Agency/NASA Solar and Heliospheric Observatory and the NASA WIND spacecraft. The model has been validated and made more accurate using historical observations from the Helios-1, the Pioneer Venus Orbiter, and the Space Test Program P78-1 spacecraft.

Earth-directed CMEs cause space storms by interacting with Earth's magnetic field, distorting its shape and accelerating electrically charged particles (electrons and atomic nuclei) trapped within. Severe solar weather is often heralded by dramatic auroral displays--northern and southern lights--but space storms are occasionally harmful, potentially disrupting satellites, radio communications and power systems.

"The new model more accurately predicts the arrival of Coronal Mass Ejections, and will greatly benefit people who operate systems affected by space storms," said lead author Dr. Natchimuthuk Gopalswamy of Catholic University, a Senior Research Associate at the National Academy of Sciences/National Research Council. "The improved forecasts let operators of sensitive systems take protective action at the proper time and minimize the unproductive time when systems are placed in a safe mode to weather the storm."

Gopalswamy and colleagues was to present his research this week during a meeting of the Solar Physics Division of the American Astronomical Society at Lake Tahoe in Nevada

Coronal Mass Ejections leave the sun at various speeds, ranging from 12 to 1250 miles per second. Only the CMEs directed at Earth are potentially harmful; estimating when they will arrive is difficult because their speed changes due to interaction with the solar wind, a stream of electrically charged

gas blowing constantly from the sun at about 250 miles per second.

Just as a motorboat heading downstream will slow to the speed of the river's current if its motor is turned off, CMEs starting out from the sun more quickly than the solar wind eventually are slowed by the drag of this "stream." If a boat pulls up anchor, it will gradually accelerate until it is moving at the speed of the current. Similarly, CMEs that start out more slowly than the solar wind are pulled along until they match the solar wind's speed.

Using data from solar-observing spacecraft, Gopalswamy and his team discovered how much the solar wind sped up or slowed down various Coronal Mass Ejections according to their initial speeds. If the initial speed of a CME is known, the new model accurately accounts for the influence of the solar wind on the CME speed, and the CME arrival time at Earth can now be precisely estimated.

For more information, visit the Lockheed Martin Solar Division web site. Reprinted from the ARRL news letter

PARTS PROFESSIONALS // WHOLESALE-RETAIL // NO REPAIRS

## BASHAM'S ELECTRONIC SUPPLY

345 West College Ave., Santa Rosa, CA 95401

Mon.-Fri. 8:00-5:30  
Saturday 9:00-12:00  
Sunday Closed

Steve Basham  
OWNER

(707) 527-6000  
(800) 675-7557  
Fax (707) 527-1368



Henry KE6ORF in southern Colorado

## KE6ORF Has great time on vacation

Henry tate KE6ORF member of SCRA completed a cross country motorcycle trip covering 6,333 miles. Tried making contacts at 146,520 MHz. The trip included visits in Georgia, Tennessee, and Illinois. The weather for the most part was very nice.

## 1000 Marbles

The older I get, the more I enjoy Saturday mornings. Perhaps it's the quiet solitude that comes with being the first to rise, or maybe it's the unbounded joy of not having to be at work. Either way, the first few hours of a Saturday morning are most enjoyable.

A few weeks ago, I was shuffling toward the basement shack with a steaming cup of coffee in one hand and the morning paper in the other. What began as a typical Saturday morning, turned into one of those lessons that life seems to hand you from time to time. Let me tell you about it.

I turned the dial up into the phone portion of the band on my ham radio in order to listen to a Saturday morning swap net. Along the way, I came across an older sounding chap, with a tremendous signal and a golden voice. You know the kind, he sounded like he should be in the broadcasting business. He was telling whoever he was talking with something about "a thousand marbles".

I was intrigued and stopped to listen to what he had to say.

"Well, Tom, it sure sounds like you're busy with your job. I'm sure they pay you well but it's a shame you have to be away from home and your family so much.

Hard to believe a young fellow should have to work sixty or seventy hours a week to make ends meet. Too bad you missed your daughter's dance recital."

He continued, "Let me tell you something Tom, something that has helped me keep a good perspective on my own priorities."

And that's when he began to explain his theory of a "thousand marbles."

"You see, I sat down one day and did a little arithmetic. The average person lives about seventy-five years. I know, some live more and some live less, but on average, folks live about seventy-five years."

"Now then, I multiplied 75 times 52 and I came up with 3900 which is the number of Saturdays that the average person has in their entire lifetime.

"Now stick with me Tom, I'm getting to the important part."

"It took me until I was fifty-five years old to think about all this in any detail", he went on, "and by that time I had lived through over twenty-eight hundred Saturdays. I got to thinking that if I lived to be seventy-five, I only had about a thousand of them left to enjoy."

"So I went to a toy store and bought every single marble they had. I ended up having to visit three toy stores to round-up 1000 marbles. I took them home and put them inside of a

large, clear plastic container right here in the shack next to my gear. Every Saturday since then, I have taken one marble out and thrown it away."

"I found that by watching the marbles diminish, I focused more on the really important things in life. There is nothing like watching your time here on this earth run out to help get your priorities straight."

"Now let me tell you one last thing before I sign-off with you and take my lovely wife out for breakfast. This morning, I took the very last marble out of the container. I figure if I make it until next Saturday then I have been given a little extra time. And the one thing we can all use is a little more time."

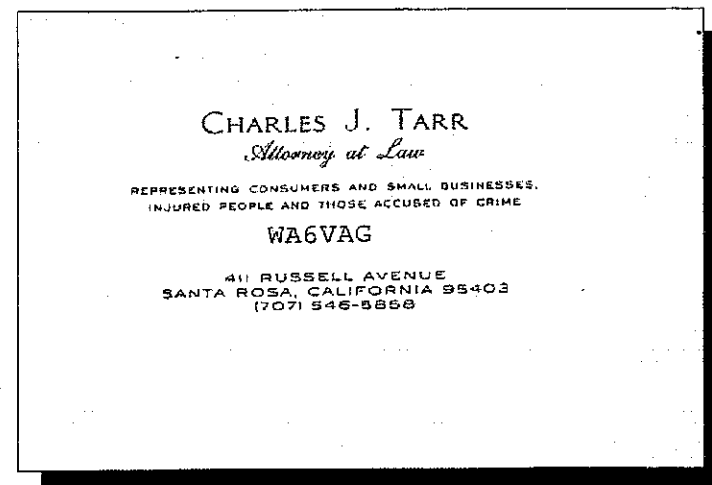
"It was nice to meet you Tom, I hope you spend more time with your family, and I hope to meet you again here on the band. 75 year Old Man, this is K9NZQ, clear and going QRT, good morning!"

You could have heard a pin drop on the band when this fellow signed off.

I guess he gave us all a lot to think about. I had planned to work on the antenna that morning, and then I was going to meet up with a few hams to work on the next club newsletter. Instead, I went upstairs and woke my wife up with a kiss. "C'mon honey, I'm taking you and the kids to breakfast."

"What brought this on?" she asked with a smile. "Oh, nothing special, it's just been a long time since we spent a Saturday together with the kids.

Hey, can we stop at a toy store while we're out? I need to buy some marbles."



## Sonoma County Radio Amateurs, Inc. Membership Meeting 7-5-2000

### MINUTES

1. Call to Order, Verification of Quorum - The meeting was called to order by President Rick Reiner K6ZWB at 7:40 PM at the Santa Rosa Agilent Technologies facility. There were 39 people present.
  - a. Introductions
    - i. Officers & Directors - The club officers and directors introduced themselves.
    - ii. Guest Speakers - Ken and Marcel from PG&E
    - iii. Visitors - Mike Reiner K6ZWC, Harmon WD6FAG, K6HKY, Steve Von der Porten, John Breckenridge WB6FRZ's XYL Carrie.
    - iv. New Calls & Upgrades - None
2. Approval of Minutes - John Mullan KD2L moved that the minutes of the June 7, 2000, be approved as printed in Shortskip. The motion passed.
3. Officer & Director Reports
  - a. Treasurer - Jim Cardillo-Lee KE6VGV reviewed the account balances. It was noted that in the past few years, the club had been spending more than it took in. Jim advised that the current Board of Directors was taking steps to stop that occurrence. Jim also advised that the HamCall CDs had been ordered.
  - b. Officers - Secretary Bill Hillendahl KH6GJV invited the members to review the binder of newsletters received from other clubs. Bill pointed out the member badges that need to be picked up. Bill also invited members to join him as he visits other clubs in the Section. Bill showed one of the four mobile magmount antennas purchased with funds donated by the Santa Rosa Cycling club. Randy Black KE6VMZ and Bill McCall W6WDM were recognized for making the presentation to the cycling club for the donation.
  - c. Directors - None.
4. Committee Reports
  - a. Activities Committee - Jeff Basham W2JAB asked for feedback on Field Day. Comments included providing a station for seasoned Hams to use and that beverages should be available from the start of the event. Jeff advised that he had printouts of the upcoming amateur radio activities in the area and of the items in Hank's Swap Shop.
  - b. Newsletter Editor - Henry Tate KE6ORF - Henry was not present to make a report.
  - c. Public Service - John Mullan KD2L advised that coming events are as follows: 7/9

Half Vineman - John is taking signups; 7/15 Healdsburg Harvest - John is taking signups; 8/12 Vineman; 9/23-24 Waves to Wine. John also mentioned the VE session on July 15th at Agilent.

- d. Repeater Committee - Greg Gordon AC6VJ reported that all systems are up and running properly. He also announced a new 220 repeater on 224.160- PL 136.5 that will be used on the Condor system. Greg encouraged members to use the system.
5. Unfinished Business - None
6. New Business
  - a. Newsline Contribution - Rick K6ZWB advised that the club makes a contribution to Newsline each year. It was recommended that the members be asked to "pass the hat" for this year's contribution. \$100 was collected and will be sent on to Newsline.
  - b. Brian Torr N6IYY, Randy Black KE6VMZ and Bill Hillendahl KH6GJV presented John Breckenridge WB6FRZ with an embroidered hat with "MacGyver" and his callsign on it for his renowned inventiveness at SCRA.
  - c. Bill Hillendahl KH6GJV presented Field Day 2000 pins to the scouts that participated in this year's Field Day.
7. Show & Tell - None.
8. Recess - The meeting went into recess at 8:15 PM and resumed at 8:30 PM.
9. Program - Ken and Marcel from PG&E discussed electric safety and showed a video of typical electrical situations that are dangerous.
10. Raffle
  - a. Regular - The 50/50 raffle was won by Mike Reiner K6ZWC who split \$46 with the club.
  - b. The membership raffle was lost by Steve Schafer KD6GC.
11. Announcements
  - a. Next Program - ARRL Pacific Division Director Jim Maxwell W6CF
  - b. Board Meeting next Wednesday at Master's Touch Mortgage, 8979 Conde Lane, Windsor, at 6:30PM.
12. Adjournment - The meeting was adjourned at 9:15 PM.