



HANK'S SWAP SHOP

Hank Davis, W6DTV 7822 Washington Avenue
Phone 823-7885 Sebastopol, CA 95472
(Noncommercial ham ads are printed for free)

TRI-EX HS471 71 ft guyed crank-up tower. 16
sq ft wind area rest. @ 80 mph. \$500.
Chuck N6OJ 763-2528.

NATIONAL NC173 rcvr \$40. NC183D \$100.
NC120 \$25. HEATH HW7 w/pwr supply \$50.
John W6CCY 823-1357.

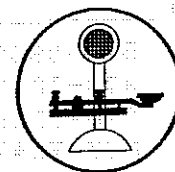
WANT: ST6000 w/1" scope, prefer high tones,
low tones OK. Harvey K6KZ 829-2350. ■



Sonoma County Radio Amateurs, Inc.
PO Box 116
Santa Rosa, CA 95402

ADDRESS CORRECTION REQUESTED

JOHN BRECKENRIDGE
WB6FRZ
574 WILD OAK DR
WINDSOR CA 95492



SHORT SKIP



Sonoma County Radio Amateurs, Inc.

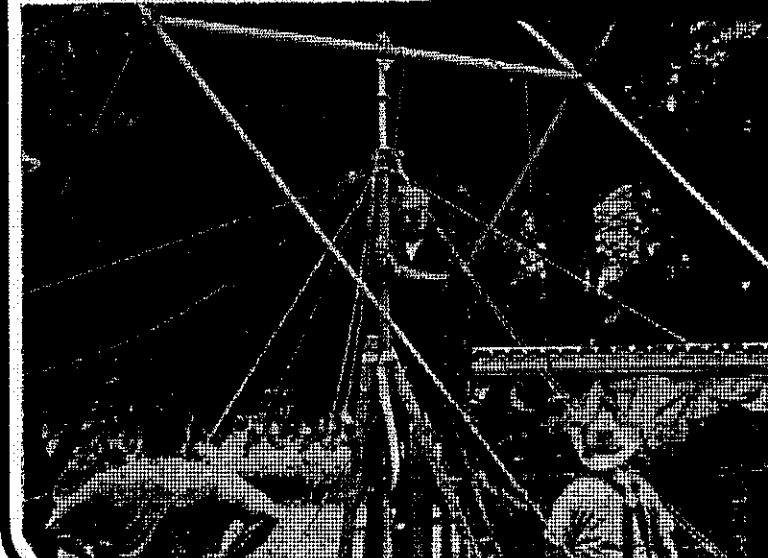
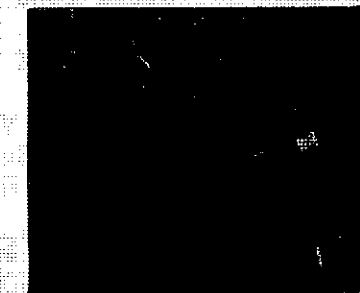
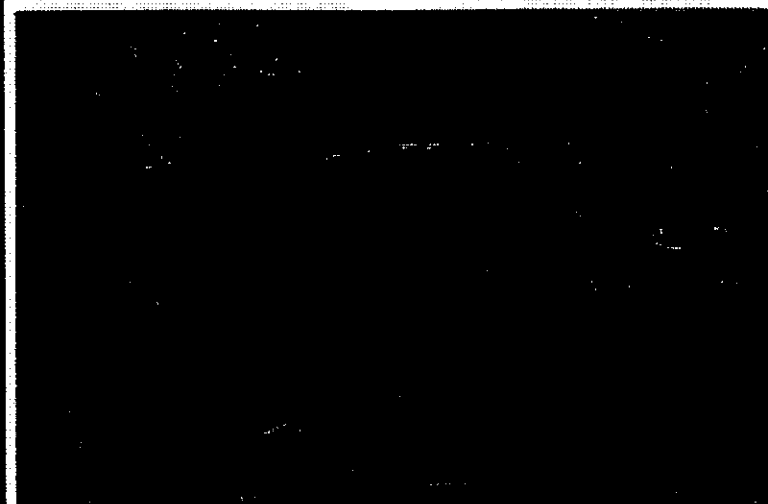
JULY 1989

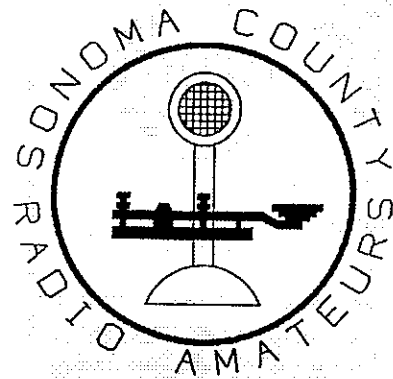
Club Station
W6LFFJ

P.O. Box 116
Santa Rosa, CA 95402

Repeater Station
WB6PVS

VOL 14 # 7





OFFICERS FOR 1989

PRESIDENT: Glen Crowover N6DNB 546-8955
 VICE PRESIDENT: John Wallack W6TLK 833-1873
 SECRETARY: Alan Bloom N1AL 538-7115
 TREASURER: Jim Pelmulder N6PTM 823-7947
 MEMBERS-AT-LARGE: Chuck Sabin N6DDK 795-2371
 Bob Olsten WD6DPE 546-5593
 REPEATER CHAIR: Jim Rutherford WB6PER 526-2972

SHORT SKIP STAFF:
 EDITOR: Alan Bloom N1AL (e) 538-7115
 1578 Los Alamos Rd, Santa Rosa, CA 95405 (d) 577-3981
 CIRCULATION MGR: Tracy Reese WB6TMY
 SWAP SHOP: Hank Davis W6DTV 823-7885

ARRL LIASON: Alan Bloom N1AL 538-7115
 ASST. DIRECTOR: Chuck Sabin N6DDK 795-2371
 BADGE CHAIRMAN: Jim Pelmulder N6PTM 823-7947
 CLUB HISTORIAN: Connie Freitas N6FYV

ACTIVITIES COMMITTEE:

PUBLIC SERVICE: Bob Sones WB6EKV 546-3873
 PROGRAM CHAIR.: Bob Olsten WD6DPE 546-5593
 FLEA MARKET: Chod Harris WB2CHO 526-2198
 EDUCATION: Chr. Tracy WB6TMY 527-8124
 WA6ACX WW6D WA8LLY WB6PDP W6TLK WB6TMY KF6WV
 TVI/RFI CHR: John Lynch W6CCY 823-1357
 AWARDS CHR: Steve Lund WA8LLY 823-4544
 VEC EXAMS: Steve Lund WA8LLY 823-4544
 WA6ACX N1AL K6ANP AG6C WD6CKP WN6D WW6D
 W6DTV WW6F WB6FRZ KF6FX W6RIA WB6UDR WU6W
 REFRESHMENTS @ MEETINGS: Bob Olsten WD6DPE
 GREETER AT MEETINGS: Jane Vanderslice N6NTB
 MEMBERSHIP LOTTERY: Bob Scolnick K6GEV
 QSL MANAGER: Doug Bender WW6D

REPEATER CONTROL OP'S:

WD6CKP Hoppy 542-6750 N6ONZ Garry 584-3425
 WB6PER Jim 526-2972 W6TLK John 833-1873
 WB6UAZ Kathi 544-7943 WN6D Jim 544-7943
 PACKET COMMITTEE: Al Bloom N1AL, Jim Boyett
 WN6D, Rich Freitas KA6SSL

SHORT SKIP ADVERTISING RATES:

Business cards: \$10

\$11 First 1/4 Column
 \$3 Additional 1/4 Columns
 (\$32 Full Page, 1 side)

Pre-printed inserts: \$32/sheet

Guaranteed circulation: 200/month
 AD DEADLINE: 15th of previous month

ARE YOU NOT AN SCRA MEMBER?

IF SO, then this is a complimentary copy. Our club is involved with almost every area of Amateur Radio: Repeaters (13/73), Field Day, license classes (Novice through Extra), volunteer exams, RACES, DX programs, packet (145.03), hidden xmtr hunts -- you name it.

We invite you to attend our next monthly meeting (see below) or check into the Tuesday night SCARS net on the 146.13/73 repeater at 7:00 PM. You will hear the latest Westlink Amateur Radio News broadcast, announcements of SCRA activities, and a Swap Shop. If you would like to join SCRA, please refer to the dues listed below. Hope to have an "eyeball" QSO with you at the next meeting! 73 ...

CLUB MEETINGS:

7:30 PM, 1st Wednesday each month at the EOC (Emergency Operations Center, see map below) All are welcome to attend.
 NEXT MEETING: July 5, 1989

DUES: \$12 per year, plus a one-time \$4.00 initiation fee. Dues are pro-rated \$1/month for new members. With membership, comes an SCRA call/name badge. Family membership: \$18

S <---- HIGHWAY 101 ----> N

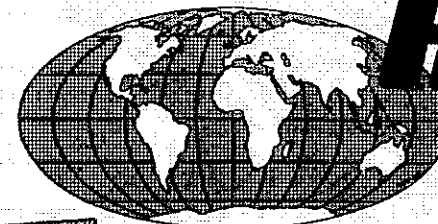


PARKING

VENTURA AVE

MENDOCINO AVE

WORLDWIDE DISTRIBUTION

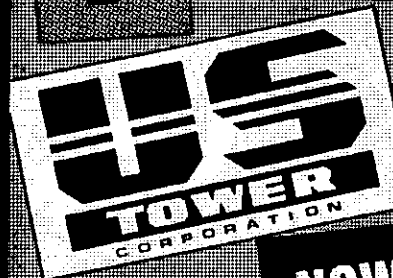


HAM RADIO OUTLET

LARGEST HAM OUTLET IN THE WORLD

FREE SHIPMENT
 MOST ITEMS UPS SURFACE

7 STORE BUYING POWER



KENWOOD



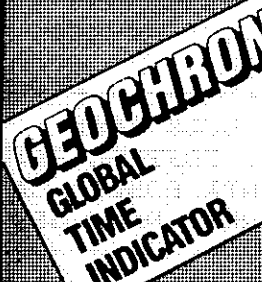
HRO FULL LINE ACCESSORIES



NOW! RAPID DELIVERIES

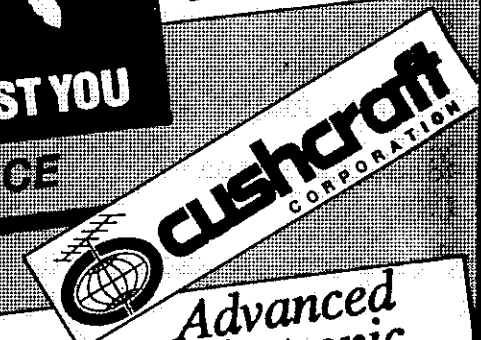


...America's Best!
TEN-TEC



FROM STORE NEAREST YOU

LOW, LOW PRICE



YAESU



Advanced Electronic Applications

All Major Brands in Stock Now!



Bob Ferrero W6RJ
 President
 Jim Rafferty N6RJ
 VP So. Calif Div.
 Anaheim Mgr.

ANAHEIM, CA 92801
 2620 W. La Palma
 (714) 761-3033, (213) 660-2040
 Between Disneyland & Knolls Berry Farm

ATLANTA, GA 30340
 6071 Buford Hwy.
 (404) 263-0700
 Larry, Mgr. WD4AGW
 Doraville, 1 mi. north of I-285

BURLINGAME, CA 94010
 999 Howard Ave.
 (415) 342-5757
 George, Mgr. WB6DSV
 5 miles south on 101 from SFO

OAKLAND, CA 94606
 2210 Livingston St.
 (415) 534-5757
 Al, Mgr. WAGSYK
 17N-5th Ave / 17S-16th Ave

PHOENIX, AZ 85015
 1702 W. Camelback Rd.
 (602) 242-3515
 Bob, Mgr. K7RDH
 East of Hwy. 17

SAN DIEGO, CA 92123
 5375 Kearny Villa Rd.
 (619) 560-4900
 Tom, Mgr. KM6K
 Hwy. 163 & Claremont Mesa Blvd

VAN NUYS, CA 91411
 6265 Sepulveda Blvd.
 (818) 988-2212
 Al, Mgr. K6YRA
 San Diego Fwy
 at Victory Blvd

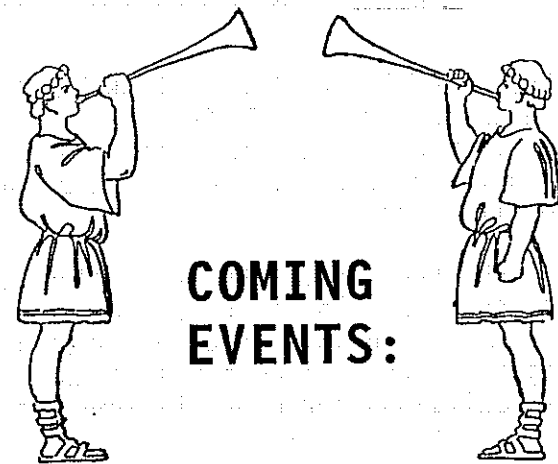
STORE HOURS
 10 AM-5:30 PM
 CLOSED SUNDAYS



CALL TOLL FREE (800) 854-6046

Toll free including Hawaii. Phone Hrs. 7:00 am to 5:30 p.m. Pacific Time. California, Arizona and Georgia customers call or visit nearest store. California, Arizona and Georgia residents please add sales tax. Prices, specifications, descriptions subject to change without notice.





COMING EVENTS:

Don't forget SCARS net on Tuesdays at 7 PM.

JULY:

- 3 - RACES etc. Net 7:30 PM
- 5 - SCRA meeting 7/7:30 PM
- 8 - Foothill College Flea Market
- 8-9 - IARU HF World Championship
- 15-16 - CQ WW VHF WPX Contest
- 17 - RACES etc. Net 7:30 PM
- 20 - CDF/VIP Meeting 7:30 PM
- 29 - Harvest Century Bike Tour (100K)

AUGUST:

- 2 - SCRA meeting 7/7:30 PM
- 5-6 - ARRL UHF Contest
- 5-6 - 10-10 10M Contest, Phone
- 12 - Foothill College Flea Market
- 27 - Bodega Bay to Breakers 5 mile race

SEPTEMBER:

- 6 - SCRA meeting 7/7:30 PM
- 9 - Foothill College Flea Market
- 9-11 - ARRL September VHF QSO Party
- 16 - SCRA Flea Market

OCTOBER:

- 4 - SCRA meeting 7/7:30 PM
- 15-16 - Simulated Emergency Test
- 16 - RACES etc. Net 7:30 PM
- 19 - CDF/VIP Meeting 7:30 PM
- 21-22? - CQWW SSB DX Contest

NOVEMBER:

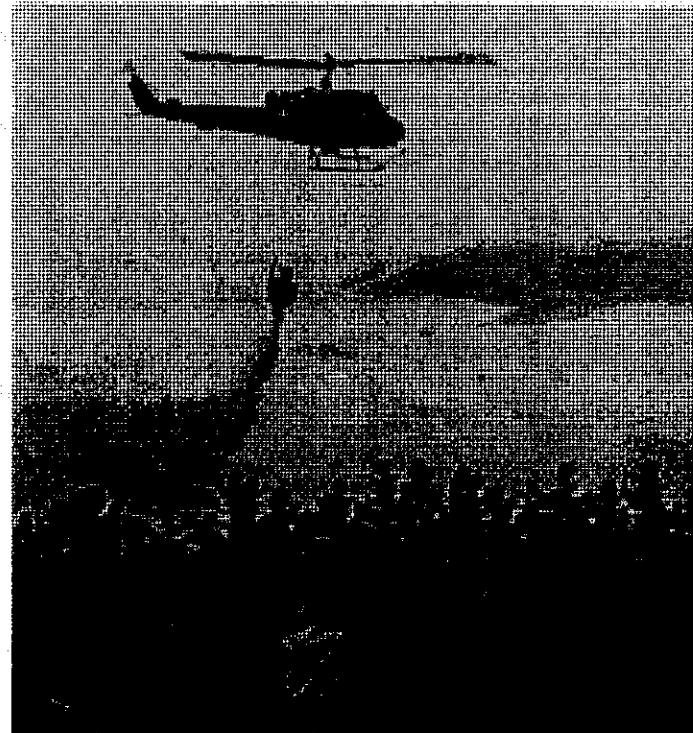
- 1 - SCRA meeting 7/7:30 PM
- 4-6 - ARRL Sweepstakes, CW
- 18-20 - ARRL Sweepstakes, Phone
- 25-26 - CQ Worldwide CW DX Contest

DECEMBER:

- 1-3 - ARRL 160 Meter Contest
- 9-10 - ARRL 10 Meter Contest

VE EXAMS HOTLINE NR: 408-984-8353

Let these scene's from last month's CDF fire training exercise serve to remind us that fire season is upon us. Be careful with those backyard barbecues, and keep the HT batteries charged for callups!



FIELD DAY 1989

Well, the turnout was a bit disappointing, but those who did show up for Field Day this year seemed to have a good time.

Where were all the phone operators? Barring excessive duplicate contacts, we made almost as many CW contacts (809) as last year, but only 170 phone QSO's vs over 800 in 1988!

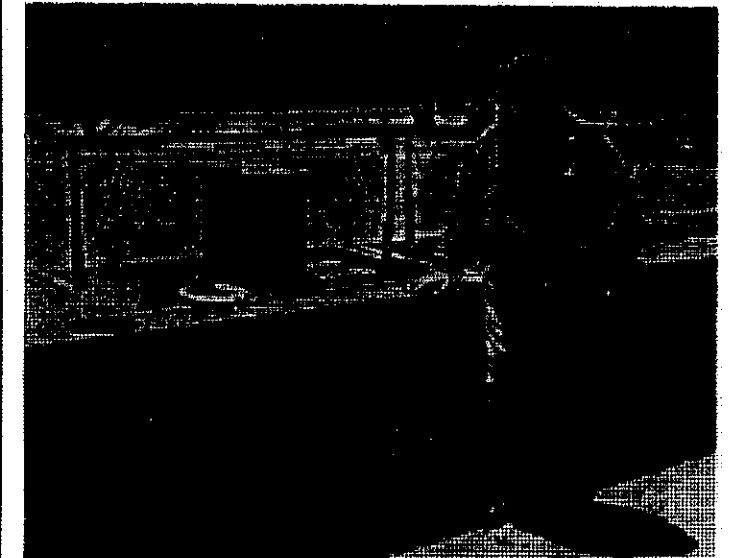
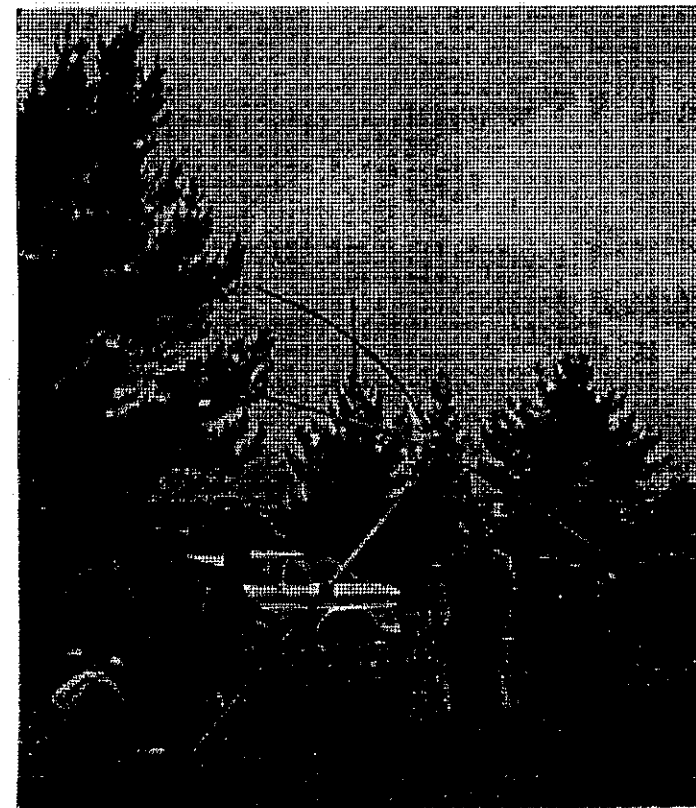
I hear thru the grapevine that REDX scored more QSO's this year than we did QSO points, so I guess we got whumped. We'll have a full report next month.

FRONT COVER: (Left-right, top-bottom) Aerial photo of the Two Rock Coast Guard Base from the air (Tnx WBØDKT, pilot), W6CCY and friends preparing the TA-33, N6DNB and KB6IOT working Novices in the dead of night, KD6HQ, WD6CKP and W6CCY manhandling the 20M quad, and KB6PTA on 10M Novice phone.

THIS PAGE: (below) W6CCY, KD6HQ, KD6GC, WD6CKP and the 20M quad

(next column) the lake, N6DDK's famous chili, the picnic Sunday afternoon.

Thanks to Edna KB6OKA for the fine photos.



EMERGENCY AUTOPATCHING

by: Jim Rutherford WB6PER, Repeater Chairman

Any discussion of emergency communications should start by referring to the FCC rule book, part 97.1 "Recognition and enhancement of the value of the Amateur Service ... particularly with respect to providing emergency communications." The rules concerning autopatching specifically state, "calls made concerning highway safety in cases where there is immediate threat to the safety of life or property are permitted."

In an effort to provide the most up-to-date and locally-accurate information on this subject, I interviewed Steve Bell, Dispatch Supervisor for Sonoma Co. Central Dispatch and Linda Jeffries, Dispatch Supervisor for Sonoma/Napa CHP Dispatch. Both were aware of the existence of Amateur Radio and our radiotelephone capability, but neither was familiar with the term "autopatch".

In an autopatch, the dispatcher is a "third party". All third-party traffic requires a control operator. As the control op, you may transmit at any time; you may also end the contact at any time by entering the OFF code. It is your responsibility to maintain ongoing communication with the dispatcher. To keep the flow of conversation going, you must un-key the mic often. If you hesitate to think, un-key the mic and allow the dispatcher to ask you questions.

The dispatcher who answers your call is trained to get certain information. This varies a little depending on the incident, but the type of incident, the location, and injuries are the minimum information we should be prepared to give on contact. The **Type of Incident** is easy: vehicle accident, fire, medical aid, robbery, etc. The exact **Location** is extremely important. If you are not sure where you are, give the general location and nearby landmarks, including highway markers. It's not our responsibility to stop and get involved, our best asset is our radio. However, if you can do so safely, try to determine if anyone is injured; they will love you for it. Do not get involved in any kind of police action like chasing people around, get the best description you can and pass it along.

There are four types of dispatch centers available on the emergency autodialer: 1) 911, located at the EOC, dispatches all county fire districts, all ground and air ambulances, and the sheriff. 2) CHP Dispatch in Rohnert Park dispatches all Highway Patrol in Sonoma and Napa Counties. 3) CDF Dispatch on College Ave. 4) All incorporated cities. In most cases you will call only two of these dispatch centers: CHP and 911. You should only call specific city dispatchers when you are sure the incident you are reporting is within that city's limits. CDF should be called only when you are sure you are reporting a fire in a State Responsibility Area (SRA). 99.9% of fires should be reported to 911.

Due to the unusual nature of communicating on a radiotelephone, both dispatchers suggest the following opening line be used unless you are extremely proficient at autopatching: "I am an Amateur Radio Operator calling from a mobile radio. I cannot hear you while I am transmitting, (un-key). This lets the dispatcher know they are not talking to a person on the phone and helps them understand the radiotelephone connection.

When should you call? Most emergencies are obvious, but what about a stalled car on the shoulder of the road? This is the lowest priority on the CHP list -- they may go and take a look after they finish writing the last accident report. If there is no hazard to the flow of traffic and you want to do public service, perhaps that could best be performed by safely stopping and calling a

(next page)

BE PREPARED TO ANSWER THE FOLLOWING (UN-KEY AFTER EACH)

TYPE OF INCIDENT
NUMBER OF INJURIES
LOCATION and/or ADDRESS
DIRECTION OF TRAVEL
DESCRIPTION OF PEOPLE AND VEHICLES
NUMBER OF LANES BLOCKED
YOUR NAME WHEN ASKED
YOUR HOME PHONE WHEN ASKED

1) This is actually the ARRL's wording. The relevant FCC regs are paragraphs 97.114(b)(3) and 97.3(w). [Ed. note]



THE NEW FCC RULES REWRITE was released at the ARRL National Convention in Arlington, TX June 3. The first complete reorganization since 1951, it updates and reorganizes the rules and codifies many policies that have evolved over the years as interpretations of existing rules. Some highlights:

Quiet Hours: The controversial proposed new enforcement procedures were deleted. The rule will remain unchanged.

Emergency Communications rules, including RACES, are now grouped into one section. An exception to the time limitation for RACES drills takes effect whenever an emergency planning official has approved the drill.

Public Service events are now specifically legal so long as the primary benefit is to the public, and any benefit to event sponsors is incidental.

Swap Nets are also permitted except for those seeking to profit from such sales, especially on-air dealers.

PRB-1 limitations on local regulation of antennas will now be written into the amateur regulations. *Tnx Westlink Report*

UNLICENSED LOW-POWER TRANSMITTING DEVICES covered under part 15 of FCC rules should not be allowed in the ham bands, says a petition for Reconsideration filed by ARRL. *Tnx Westlink Report*

NO SPECIAL CALLSIGNS. FCC has killed PRB-3, the proposal to allow a private organization (such as ARRL) to issue special or preferred callsigns. ARRL will continue to ask for special callsigns for club stations, at least. *Tnx ARRL Letter*

NEW AND RENEWED MEMBERS



SINCE LAST MONTH

Bob Sones WB6EKV
4810 Rockridge Lane
Santa Rosa, CA 95404
546-3873

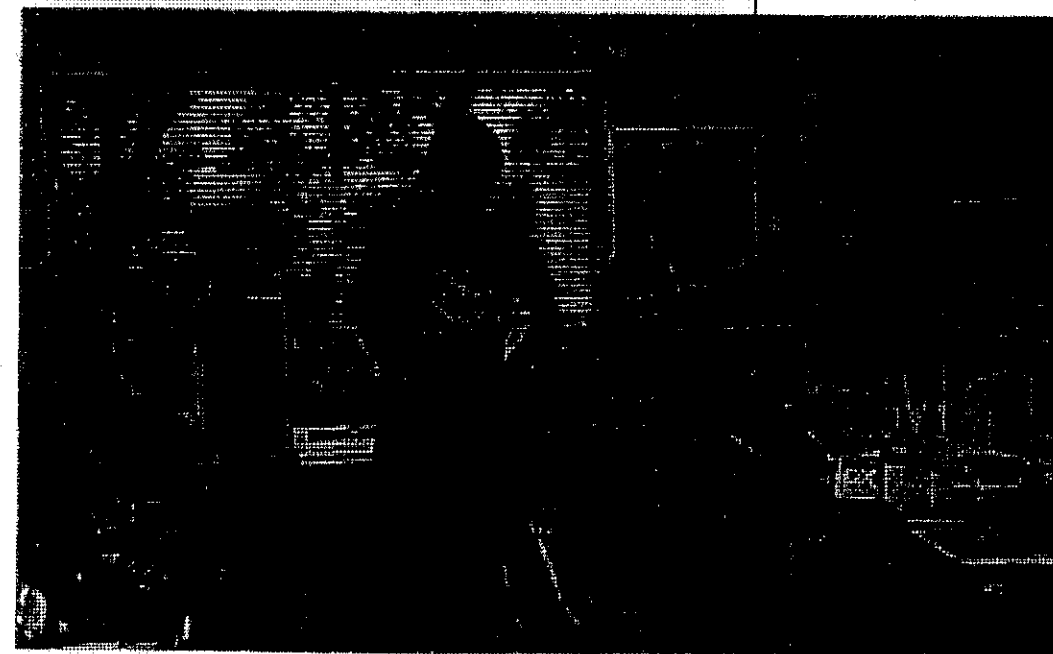
Candy Vawter N6NSG
1350 Gaspar Ct.
Rohnert Park, CA 94928
584-4670

Robert Ybarra WB6LCH
1345 "A" Lincoln Ave
San Rafael, CA 94901

Warren Walker WG6Y
PO Box 22
Lakeport, CA 95453

Dale C. Vawter N6MRV
1350 Gaspar Ct.
Rohnert Park, CA 94928
584-4670

We now have
168 members. ■



SCRA member Chod Harris VP2ML is the publisher of *The DX Bulletin*.

Here he is in corporate Galactic Headquarters (you can see about half of it in the photo).

That's Chod seated with visitor Hiroo JA2EZD. Not shown is the company mascot "Dog X-ray".

SCRA MINUTES

June 7, 1989



The meeting was called to order by President Glen Crowover N6DNB at 7:33 PM. The only VISITOR was Dick K7TJZ.

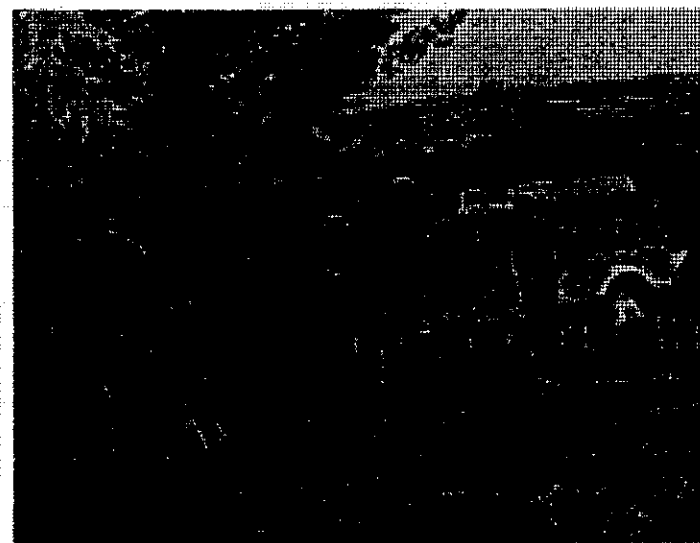
UPGRADES since last month include N6UXI who is now signing KJ6UY.

The MINUTES from last meeting were approved as printed in *Short Skip*. m/s N6KMJ/N6DDK

The TREASURER'S REPORT shows \$1925.86 in the General Fund and \$1981.65 in the Repeater Fund. Approved. m/s N6DDK/N6KMJ

Please pick up your BADGE from N6PTM if you are one of those new members who hasn't gotten one yet.

PUBLIC SERVICE events coming up include the Terrible Two, a 200 mile bike trek over Sonoma County's biggest hills, on June 24. July 29 is the Harvest Century bike tour from Healdsburg, and the Bodega Bay to Breakers run is August 27. Chairman Bob WD6EKV appreciates the large number of volunteers who have been helping out.



ANSWER: Five, plus a Coast Guard Fire Captain. Thanks to KB6OKA for the photo and the snide comment ...

EDUCATION: Tracy WB6TMY has finished his Novice class with 4 new hams so far. Thanks to Hoppy WD6CKP and others for help with returning the key to the EOC so often. We need an alternative to the EOC for classes.

The CDF COMM. VAN is now being wired for 12V DC and telephone and should be ready for fire season coming up, says Garry N6ONZ.

The FLEA MARKET is September 16 this year. Al N1AL says we need to nail down a site before the end of this month.

After intermission there was a long discussion of FIELD DAY preparations. The club will provide chili, courtesy of Chuck N6DDK on Saturday night and Hot dogs and sodas for the PICNIC Sunday noon.

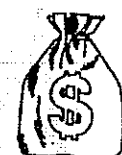
John W6TLK pointed out that we need a NCS station for the Tuesday night net. Raffle prizes were generously provided by George KS6W of HSC Electronics and Zane WB6SRU of Farmer's Lane Radio Shack.

The MEMBER LOTTERY was lost by Bob K60EQ.

Respectfully submitted by Al N1AL Secretary.

TREASURER'S REPORT

FOR MONTH ENDING May 31, 1989



ACCOUNT	REVENUE	EXPENSE
Refreshments at meetings ..	6.50	7.73
Raffle at meetings	24.00	
Dues and Initiations	424.00	
Fund-Raisers (ARRL).....	3.00	
Badges		14.84
Misc	15.25	
Repeater Fund		1.00
Short Skip Newsletter	64.00	67.40
Membership Supplies.....	1.75	
Officers' Expenses		5.00
	538.50	95.97

ASSETS:

General Fund Account	1407.83
Cash/checks on hand	545.03
Total General Fund	1952.86
Total Repeater Fund	1981.65

- de N6PTM

tow truck. This will make lots of points for Amateur Radio; calling the CHP will not. The key word is HAZARD. If traffic is dodging, slowing or gawking, or a vehicle is standing in the roadway, it is probably a hazard worth calling in.

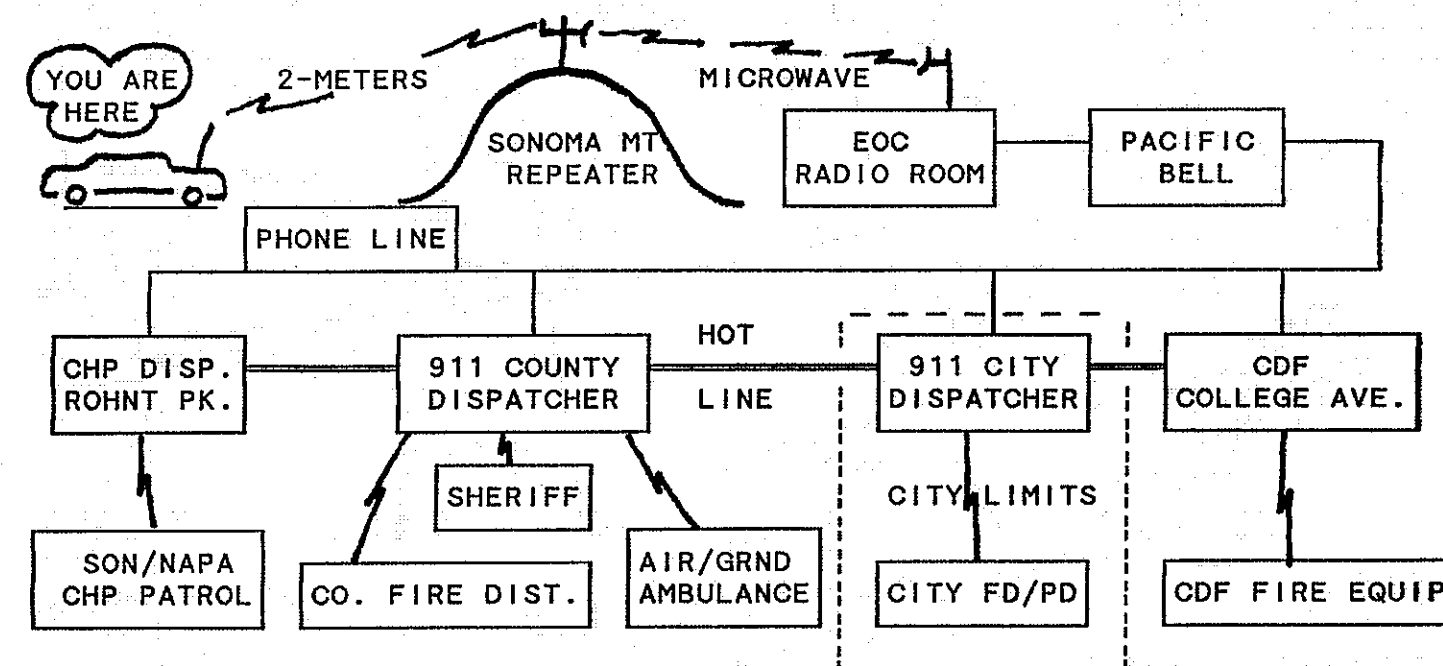
About 50% of the time, traffic is relayed by a home station. When this happens, the home station becomes an intermediate dispatcher and should get all the facts before making the phone call. The phone number you should call for CHP (and the number dialed by the repeater) is 576-2073. Central dispatch is at 527-2121. Post these numbers by your home phone so you can be of assistance if needed. Don't answer the call if you can't help. Recently a station was heard giving a two-minute monologue on why he was unable to call the CHP for a mobile station -- it only takes a second to die. Use your beanie: If you can help, do so. If you can't, keep your hands in your pockets.

There is a third possibility: bringing the autopatch up for another station. This is an individual call. If the reporting party is stopped at the scene of an injury accident or other ongoing emergency incident, he/she may be able to add important commentary that would help responding agencies. In most cases, we report accidents after we have passed the scene, and direct contact is not as important. If you are home relay station, get the facts straight. Personally, I almost never bring up the patch for another station. Why? Because I become the control operator of a situation over which I have little control. However, if you feel this is the proper action to take, do it.

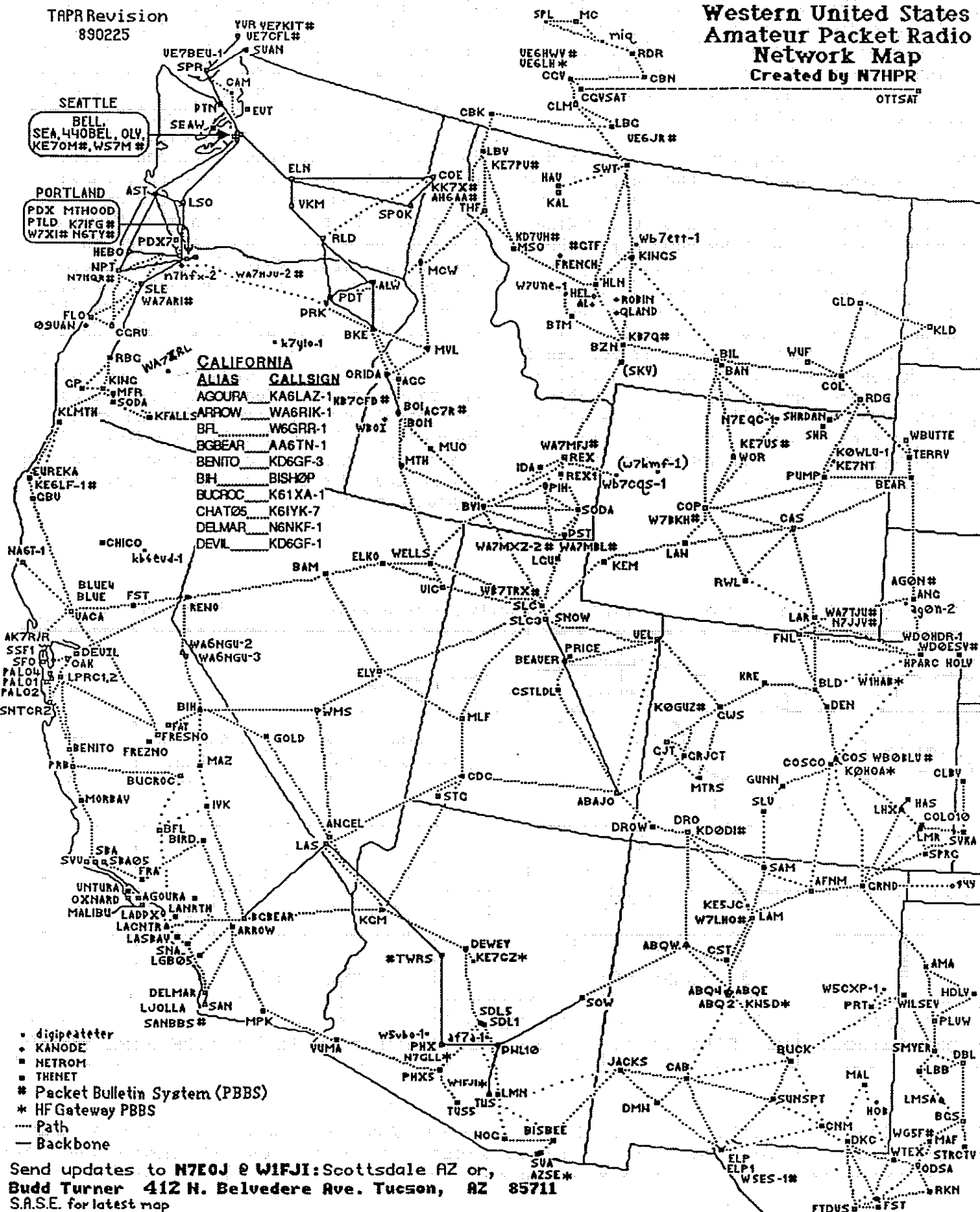
The phone bill and microwave system for the autopatch are provided by the Sonoma County Communications Department through Pres Thomson WA6PUE and Don Bostrom AI6F. Our thanks and hats off to them for recognizing the Amateur Radio potential in emergency communications.

EMERGENCY AUTOPATCHING

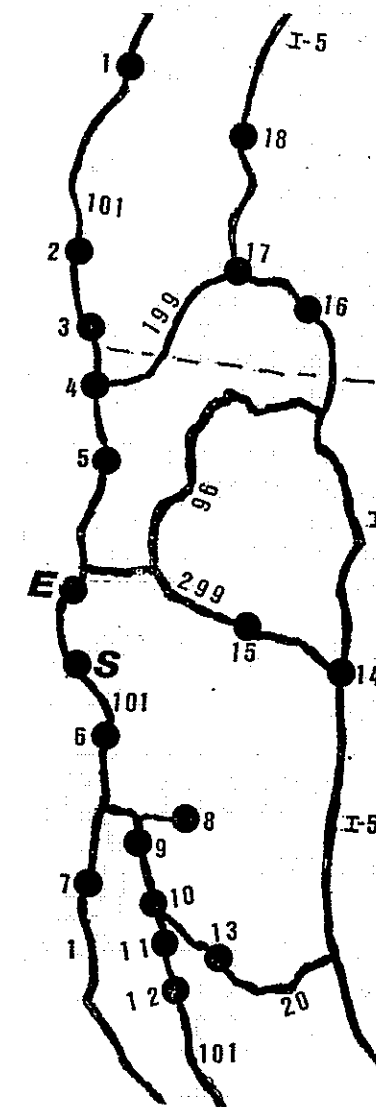
RADIO, MICROWAVE, TELEPHONE PATHS



If you live in a city and dial 911 from home you will get your city dispatch. If you dial 911 to report an incident outside city limits ask the dispatcher to transfer you to the appropriate agency, ie: CHP or Central dispatch.



VACATIONING UP THE COAST?

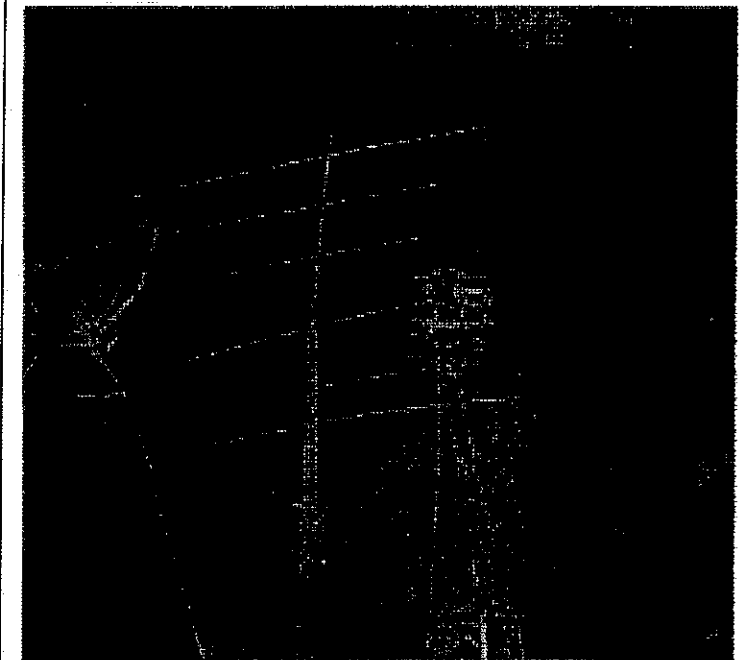


1. Coos Bay OR
146.61 147.12
2. Gold Beach OR
146.74
3. Brookings OR
146.97
4. Crescent City CA
146.88 147.18
5. Klamath CA
145.01 KLMTH
E. Eureka CA
146.67 146.70
147.00
145.01 EUREKA
S. Scotia CA
146.76
145.05 HMBLT
6. Garberville CA
146.79
146.61 (100 Hz)
145.01/.05 GBV
7. Ft. Bragg CA
146.82
8. Covelo CA
147.21
9. Laytonville CA
145.05 CAHTO
10. Willits CA
145.13
11. Hopland CA
146.88
12. Santa Rosa CA
146.73 146.91
145.03 WB6PVS-1
13. Clear Lake CA
146.775
14. Redding CA
146.76
15. Weaverville CA
146.73
16. Medford OR
146.94
17. Grant's Pass OR
146.64
18. Roseburg OR
145.43

Tnx R.A.I.N.
and KA6SFX, KE6WC

QUESTION:

HOW MANY HAMS DOES IT TAKE TO START A
GENERATOR? (Answer on next page).



Jim WB6PER and Terry WA6LIA repair a shorted 144G7 vertical and a kadi-wumpus TH6DXX for Frank W6SVC who suffered a stroke last December. Frank says "Thanks guys for a job well done in the spirit and pride of Amateur Radio."
- Tnx W6SVC

Radio Shack

STORE NO. 3855

ZANE BATES
MANAGER

510 FARMERS LANE
SANTA ROSA, CA. 95408

TELEPHONE
546-8423

H.S.C. Electronic Supply

PHONE: (707) 792-2277

of Santa Rosa

DIVISION OF HALTED SPECIALTIES, INC.
PARTS - EQUIPMENT
Electronics - Lasers & Optics
Microcomputers - Amateur Radio

6819 S. SANTA ROSA AVENUE
COTATI, CA 94928

GEORGE SHEDOME
KS6W MANAGER